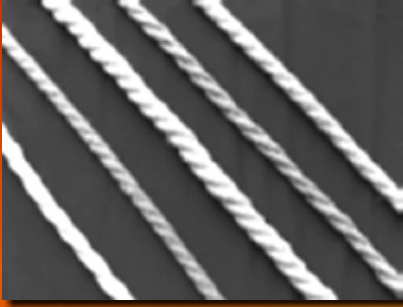


Ceramic 3 Ply Rope



Properties

Ceramic 3-PLY rope is a high performance rope available in low density rope (LD) made from ceramic fiber sliver, provide better elasticity, softness, and high density rope (HD) made from ceramic fiber yarn with glass filament or stainless steel wire reinforcement to provide high strength at elevated temperatures.

Ceramic 3-PLY rope contains approximately 18% organic fiber which burns out at high temperatures, causing some smoking and outgassing, but has no effect on the properties of the products.

Physical Properties

		1260	1430
Max.Temp.Rating		1260°C	1430°C
Melting Point		1760°C	1740°C
Temperature Limit of insert		Glass : 650°C Steel: 1100°C	Alloy Wire : 1300°C
Ceramic Fiber Composition	Al ₂ O ₃	46 %	28-32 %
	SiO ₂	53%	52-56%
	ZrO ₂		14-18 %
Diameter of Ceramic Fiber		3-4 micron	3-4 micron
Thermal Conductivity		<0.18 W/mK (1000°C'de)	<0.18 W/mK (1000°C'de)
Shrinkage (24hr)		3 % (1200°C'de)	3 % (1400°C'de)
Lost on Ignition		18 %	18 %
Electrical		Glass : Non-Conductive	Glass : Non-Conductive
		Steel : Conductive	Alloy Wire : Conductive
Density	LD	250-350 kg/m ³	280-380 kg/m ³
	HD	450-550 kg/m ³	500-600 kg/m ³
Color		Beyaz	Beyaz

Typical Applications

- Asbestos cord, rope replacement
- Fireproof wrap and insulation
- Radiant tube packing for heat-treat furnaces
- Seals for stoves and ovens
- Expansion joint packing
- Bulb in tadpole gaskets
- Gaskets and seals
- Wick for oil burning apparatus

Usability

- Diameter : 6 - 50mm
- Custom sizes available upon request.

*Bu bilgiler, de i ebilen tipik özellikleri temsil etmektedir ve spesifikasyon amacıyla kullanılmamalıdır.
This data represents typical properties subject to variations and should not to be used for specification purposes.*